



A new level of safety



www.remsa.com

With more than 45 years of experience

Remsa is today a worldwide manufacturer of brake parts for the automotive industry. Ours is a story of continuous improvement and technological development which has placed our company among the greatest brake pad manufacturers, **leading the production for the aftermarket segment into the European Market.**

Our R&D department is constantly testing new prototype friction materials performing over 2 million kilometers per year in laboratory, road and fleet tests. Road tests, along with the AK-Master test, are conducted on the whole range in the dynamometer test bench to evaluate **the quality of Remsa's brake pads.** All this to pursue a higher performance with results that outperform the original equipment results in some of the most important vehicles in Europe.

Facts:

- **130 million spare parts** produced in 10 different factories worldwide.
- A broad range of brake spare parts both for passenger and commercial vehicles.
- **25 million** car brake pad sets produced per year.
- **1,5 million** car brake discs sold per year.



130 Million



ADT. ALPINE DESCENT TESTS

Alpine descent tests are fundamental in the development and research process of new friction material. These tests are usually performed by experienced **Remsa** drivers in the Austrian Großglockner mountain area, especially in Edelweisspitze (2.571 m.), a road with a 12% average slope that reaches up to 18% in some of its sections.

SLOW DESCENT TEST

- Medium speed: **40** km/h
- Top speed: **80** km/h
- Long: **16** km • Time: **23'**
- Final temperature: **600 °C** More than 500 °C since 10 corner

SPEED DESCENT TEST

- Medium speed: **60** km/h
- Top speed: **120** km/h
- Long: **16** km • Time: **15'36''**
- Final temperature: **800 °C**

Spare Parts

BRAKE PADS

With a production of more than **25 million brake pad sets per year**, Remsa offers a range of more than **2.000 references** at different levels of accessories. Such a wide range is possible thanks to our fully integrated manufacturing system.

HPT (HIGH PRESSURE TREATMENT)

HPT is implemented in all **Remsa** factories. During HPT the pad is exposed to a temperature of 650° and to a pressure of 1 ton in order to ensure a full healing of the pad after several hours in the oven.

This process facilitates the pads settling offering maximum performance under the most severe conditions right after being installed in the vehicle. Other advantages:

- **ECE R-90 tested.**
- Toxic metal free and thus **eco-friendly**.
- **Very good wear rate** and short braking distances.



BRAKE DISCS

The continuous development of our company, as well as the quality and diversity of our products, have placed us among the top manufacturers in the European aftermarket.

Thanks to our R&D department, **Remsa** offers a wide range of references —covering 99% of the European— that count with the most prestigious quality standard certifications:

ABE 61209 approval for ventilated discs

ABE 61210 approval for solid discs



"TUV tested and KBA Type Approved regarding §22 in connection with §20 of German StVZO"



Kraftfahrt-Bundesamt
DE-24932 Flensburg

RAW MATERIAL

Just as it happens with our brake pads, our discs' raw material is selected keeping in mind the highest European standards. **Remsa** discs are built in perlite grey iron smelting with a very high content of laminar graphite which exceeds the **EN-GJL 200 standard** and the **GG20** standard concerning tensile strength, and surpasses the requirement of minimum resistance of 200 N/mm² specified by **the standard DIN EN 1561** and usually required by vehicle manufacturers.



TWIN KIT

QUALITY SE 4.1

The **Remsa Twin Kit** range includes **SE 4.1** brake pads which have been granted the highest number of **ECE R-90** quality standard awards within the market.

With **300 references**, the Twin Kit range covers approximately **95% of the European vehicle park**.



BRAKE SHOES

Our shoes are manufactured to meet high quality standards and thereby ensure a lasting braking performance. With a wide product range of over **500 spare parts**, Remsa is certainly ready to satisfy the aftermarket demand worldwide, including European, American and Asiatic applications.

Our brake shoes are also equipped with a broad range of accessories.



SUPER PRECISION KIT



Remsa Super Precision Kit covers **98%** of the European passenger car park. The kit is pre-assembled and contains all the parts required for installation. Moreover, it capitalizes **the assembly time by 48%**, avoiding mistakes in installation and reusing used pieces to ensure an efficient and correct braking.

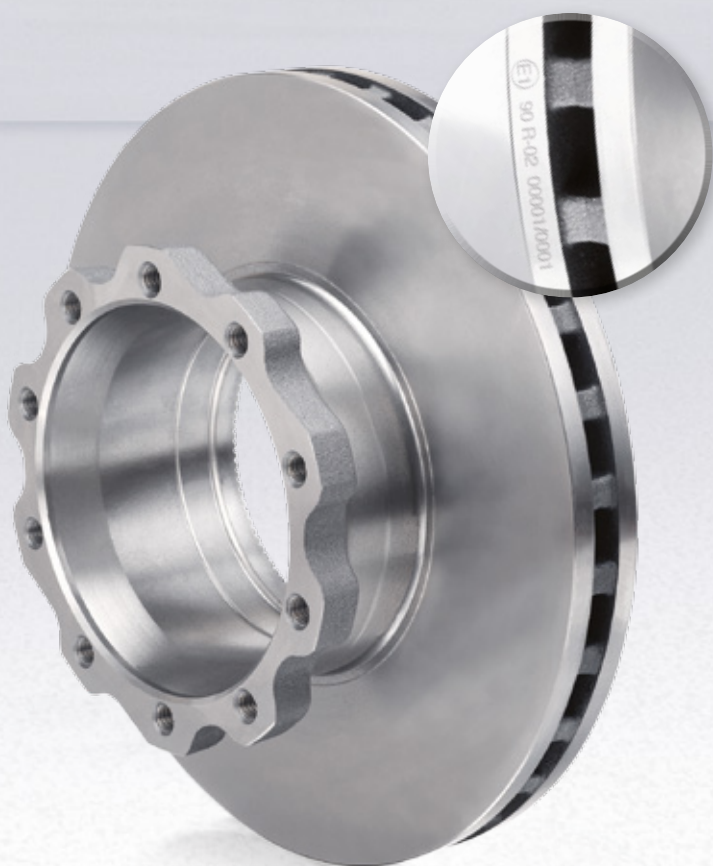
That, along with the constant supervision of our R&D department, guarantees an efficient, high-quality braking.



COMMERCIAL VEHICLE BRAKE PARTS

Remsa™
Heavy Duty Line

In order to meet the high demands of the commercial vehicle sector, we work closely with international logistics companies for fleet tests. These tests ensure the high quality and safety of our products, **which cover 99% of the park.**



Other quality features:

- **ECE R-90** approved brake discs and pads.
- Development of new friction materials with the most advanced adhesive properties on the back plate.
- **Remsa** brake pads are manufactured under a fully automatic deep mold presses.





www.remsa.com

Head Office

C/ Pino, 5

P.I. El Guijar 28500 Arganda del Rey (Madrid) SPAIN

T: 902 110 157 • F: 902 112 413

E-mail: marketing@eurofren.com

Distribution Center. EUROFREN SYSTEMS S.L.U.

Carretera de Ágreda, s/n

42110 Ólvega (Soria) SPAIN

T: +34 976 192 400 • F: +34 976 192 401

E-mail: marketing@eurofren.com